



# RogaDAQ2

## Portable Data Acquisition and Analysis

Analog Inputs	
BNC-Inputs	2, for analog signals
Simultaneously sampling ADCs	2
Resolution	24 Bit
Sampling rate	48 kHz max.
Range input	$\pm 10$ V max.
Selectable AC- or DC-coupling	
Selectable IEPE sensor	supply (4 mA/28 V)
Self adjusting Anti-Aliasing filter	
Accuracy	better $\pm 0,1$ dB, Dynamic Range > 100 dB, THD < 0,005%, Frequency Response $\pm 0,05$ dB
Channel deviation	< 0,01 dB, < 0,05°
Channel separation	> 85 dB

**Supported PC Systems**  
WinXP, Vista, Win7, Win8

RogaDAQ2 is a high performance portable Data Acquisition Device. It features two high quality, high speed, simultaneous sampling inputs.

ROGA-Instruments makes no representations or warranties with respect to the accuracy or completeness of the contents of this document and reserves the right to make changes to specifications and product descriptions at any time without notice.

ROGA-Instruments, Steinkopfweg 7, D-55425 Waldalgesheim  
Phone: +49 (0) 6721-98 44 54, E-Mail: info@roga-instruments.com

*RogaDAQ2 NVH Analyzer & Recorder*



## *RogaDAQ2 NVH Analyzer & Recorder*

Dear Customer!

Congratulations on the purchase of your RogaDAQ2 SC. This Product has been carefully designed and engineered to provide you with a precise and reliable data acquisition instrument. Please read this instruction manual before using the product, and keep it at hand for reference.

You're ROGA-Instruments-Team

### **1. Introduction**

#### 1.1 System Requirements


PC with compatible OS and one available USB-connector (USB1.0, 1.1 or USB 2.0)

#### 1.2 Included Parts

Following parts are included:

- 1 RogaDAQ2 2-Channel-DAQ
- 1 USB-cable
- 1 CD ROM
- 1 carrying case

#### 1.3 Safety Information– read before use!

 **Caution:** The unit is only suitable for low voltage measurements. Under no circumstance should voltages (AC or DC) above 40 Volt peak be connected to any input or output. Please enable the IEPE supply only while an IEPE compatible sensor is connected to that input, as other devices may be destroyed by the IEPE voltage of up to 28V.

The IEPE supply may also cause interference if there is no sensor connected.

### **2. Getting started**

#### 2.1 Connecting hardware

##### *2.1.1 PC connection:*

Use the supplied USB-cable to connect the RogaDAQ2 to an available USB port on your PC.

##### *2.1.2 Analog Input*

Connect your signal or sensor to the analog inputs (*in 1* and *in 2*) using the supplied BNC cable

## *RogaDAQ2 NVH Analyzer & Recorder*

### 2.2 Installation

Start your PC. Microsoft Windows ME, Windows 2000, Windows XP or above should be installed. These operating systems do not require additional drivers. The RogaDAQ2 will be automatically detected and installs it as *USB-Audio-Device*.

You may now use your RogaDAQ2 with any software supporting Windows PC soundcards.

### **3. Making Measurements**

#### 3.1 Scaling

The RogaDAQ2 outputs the analog signals as signed 16bit PCM data with a range of -32.768 to +32.767. The maximum values represent the maximum input range (e.g. +32.767 = 5V; -32.768 = -5V). The input range is defined as peak voltage, not rms.

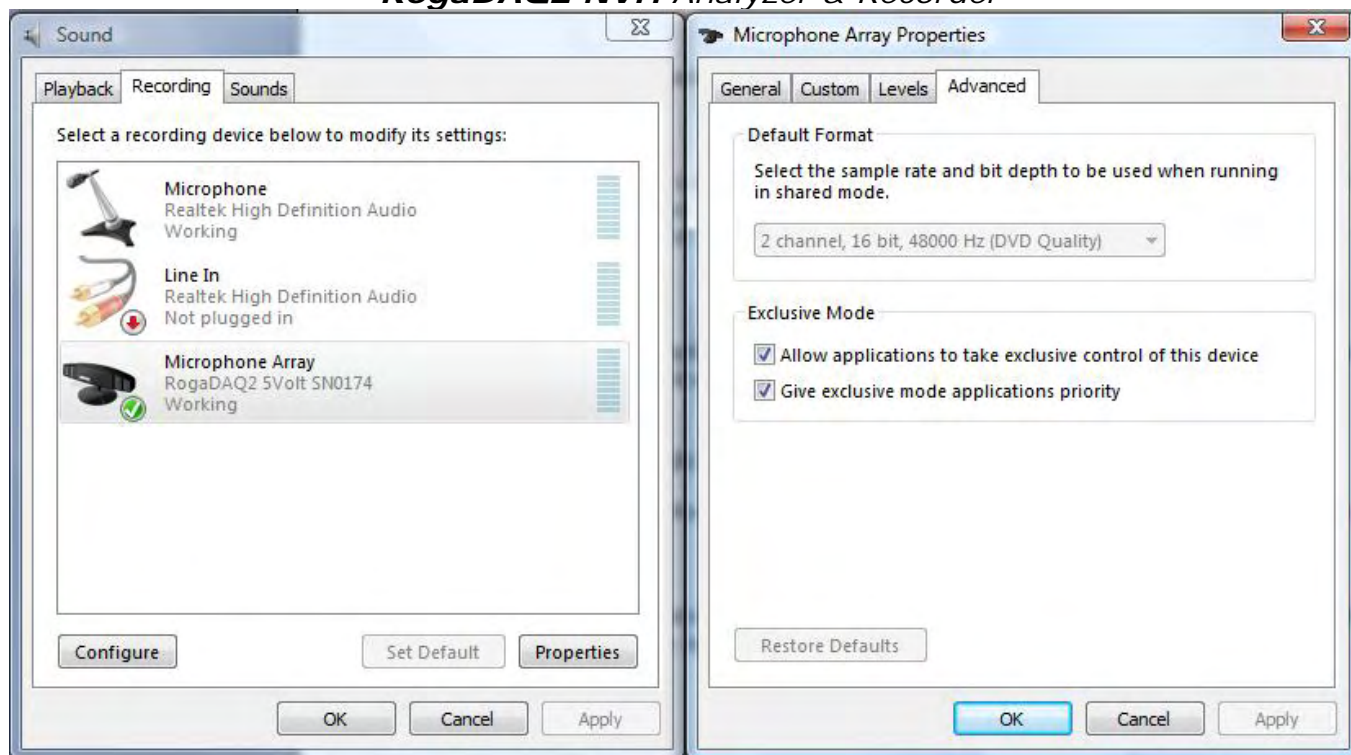


Not all software applications detect the supported sampling rates properly. Please make sure to only use the supported sampling rates as outlined in the specifications section.

#### 3.3 Setup & Sensor supply

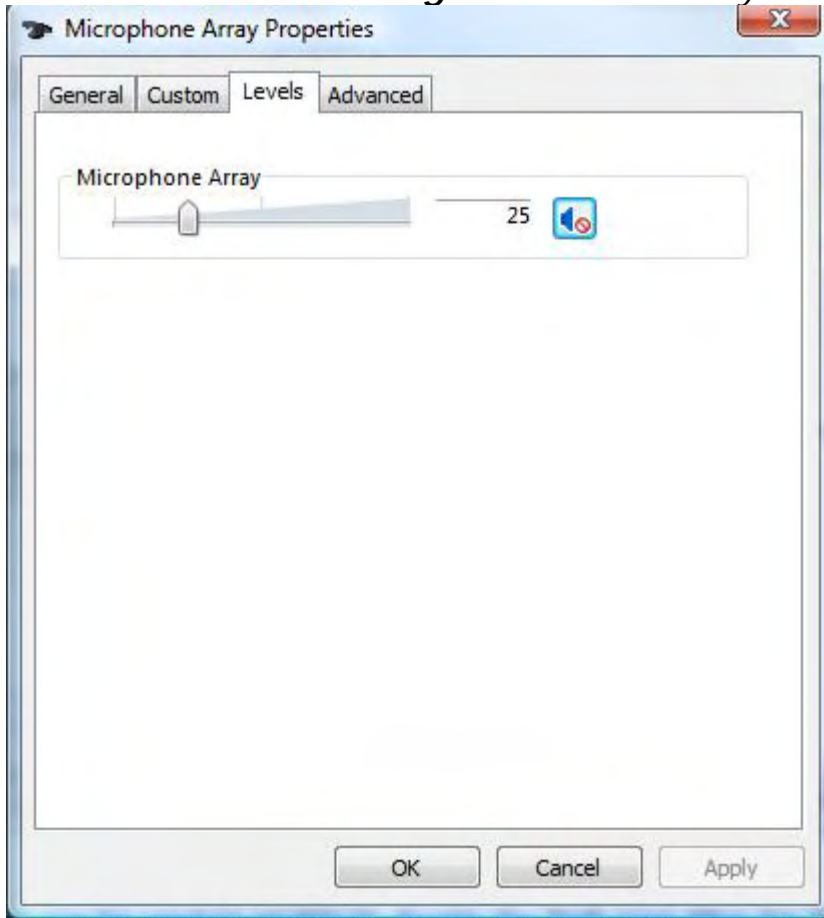
As first make sure that the RogaDAQ2 is enabled for two channel mode in the sound card properties:

### RogaDAQ2 NVH Analyzer & Recorder



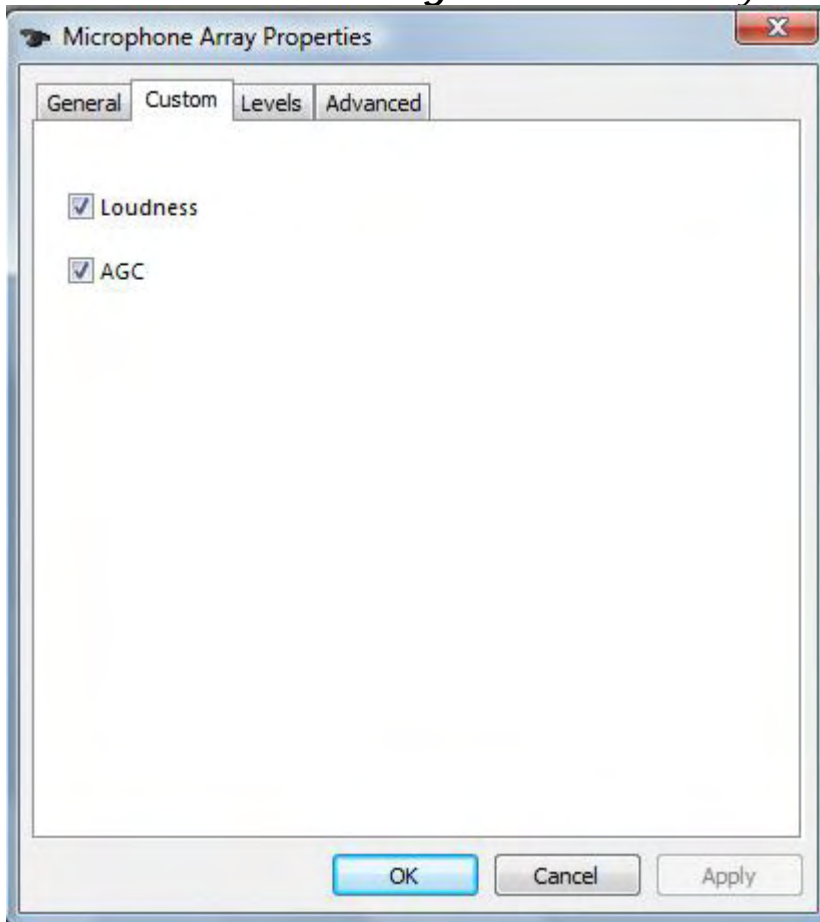
The **AC/DC** on/off function can be used to enable or disable the high pass filter for the channels, by using the "Mute On/Off" check box at the Windows soundcard properties.

*RogaDAQ2 NVH Analyzer & Recorder*



The **IEPE on/off** function can be used to enable or disable the IEPE 24V/4mA constant current supply for direct connection of ICP\* compatible sensors, by using the "AGC or Bass boost (Loudness) On/Off" check box at the Windows soundcard properties.

*RogaDAQ2 NVH Analyzer & Recorder*



#### **4. Care and Maintenance**

This equipment does not require scheduled or preventive maintenance. If you handle it with care, it will be a reliable tool.

Should your RogaDAQ2 require cleaning, use a damp cloth or mild cleaning fluid. Take care not to get any fluid in or around the connectors.

If your RogaDAQ2 requires manufacturer inspection and calibration, please contact your vendor.

## *RogaDAQ2 NVH Analyzer & Recorder*

### 5. Troubleshooting:

In case you experience problems with your RogaDAQ2:

- Check that it is correctly recognized and installed by Windows. A **USB- Audio device** should be found under **Audio, Video and Game controller** in the *device manager*.

Select **RogaDAQ2 SC** as **default device** under **Properties of Sound and Audio devices**

- Some application software requires manual selection of the recording and playback device. Please refer to the manual or help function of your application software.

If you continue to experience problems, please contact your vendor.

### 6. Specifications (typical, fs=48kHz, f=1kHz,-3dBFS unless otherwise noted)

#### Analog Inputs

Impedance	: 1 Mega ohm, single ended BNC
IEPE/ICP* sensor supply	: 24V/4mA
Input ranges	: +/- 5V (other ranges RFQ)
Resolution	: 24bit Sigma Delta ADC
Frequency Response	: DC-20kHz +/-0.15dB
Sample rates	: 48kHz & (64 kHz, 96 kHz one channel Ultra Sonic version)
Overall accuracy	: better 1%
Gain error	: less than 0.1%
THD	: less than 0.01%
Dynamic range	: 96dBA
Channel separation	: better 90dB
SFDR	: -115dB
Aliasing rejection	: better 90dB (to 0.4x fs)

#### Miscellaneous

PC-interface	: USB1.1 & 2.0 compatible
Power supply	: USB powered: 5V, 480mA
Temperature range	: +0°C to +50°C
Dimensions	: 150mm*82mm*32mm
Weight	: approx. 150g

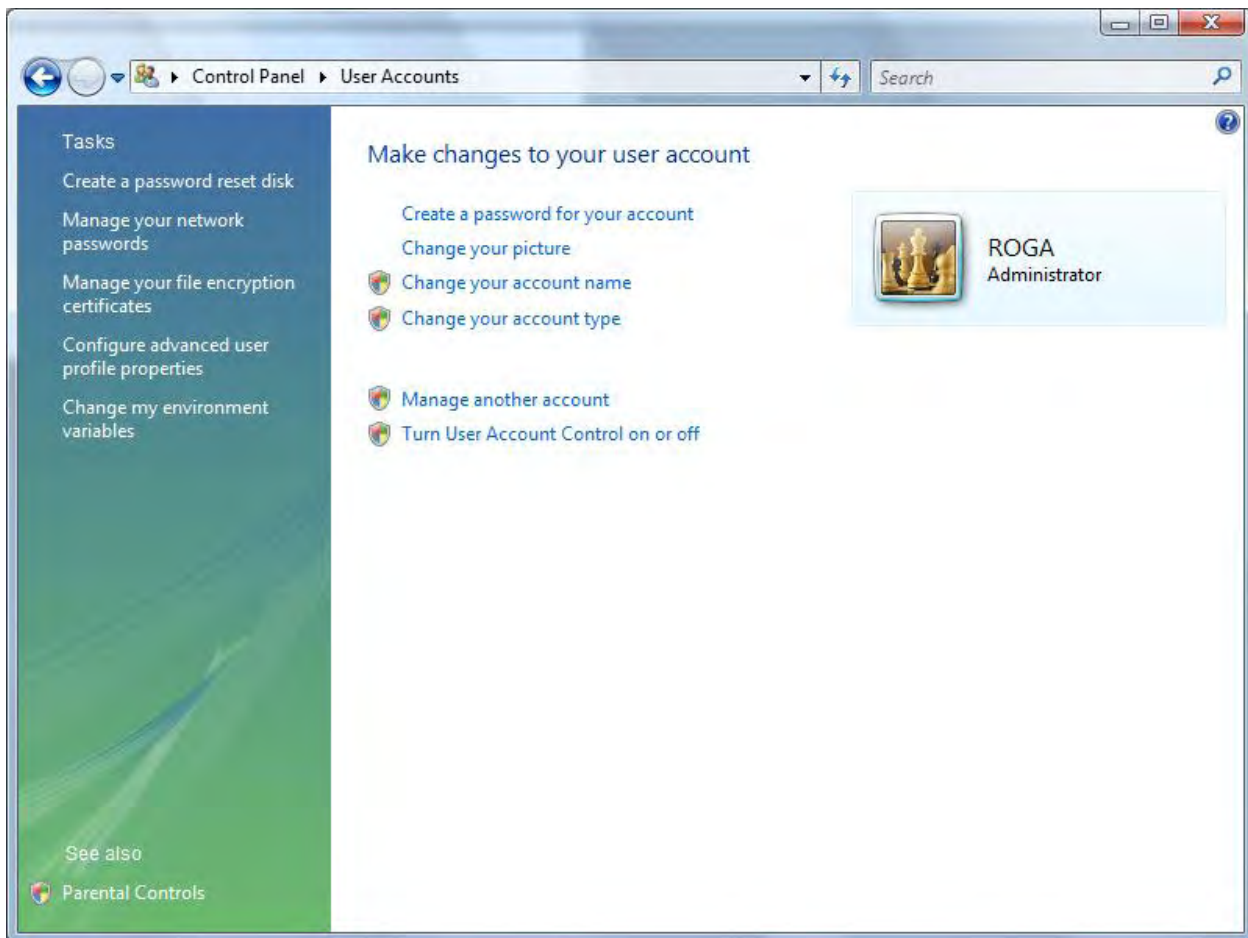


## *RogaDAQ2 NVH Analyzer & Recorder*

### *Getting started with DEWESoft FFT Analyser*

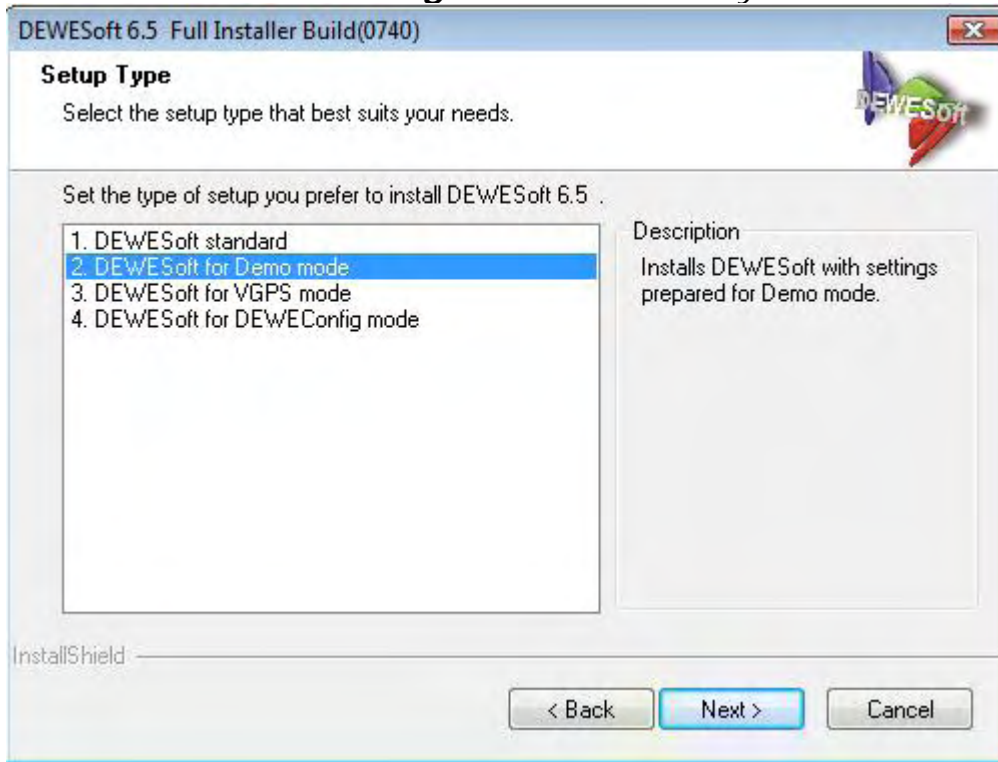
#### *For Windows Vista users:*

Before you setup the DEWESoft program under Windows vista, please make sure that the at the control panel; user account the "User Account is turned off".



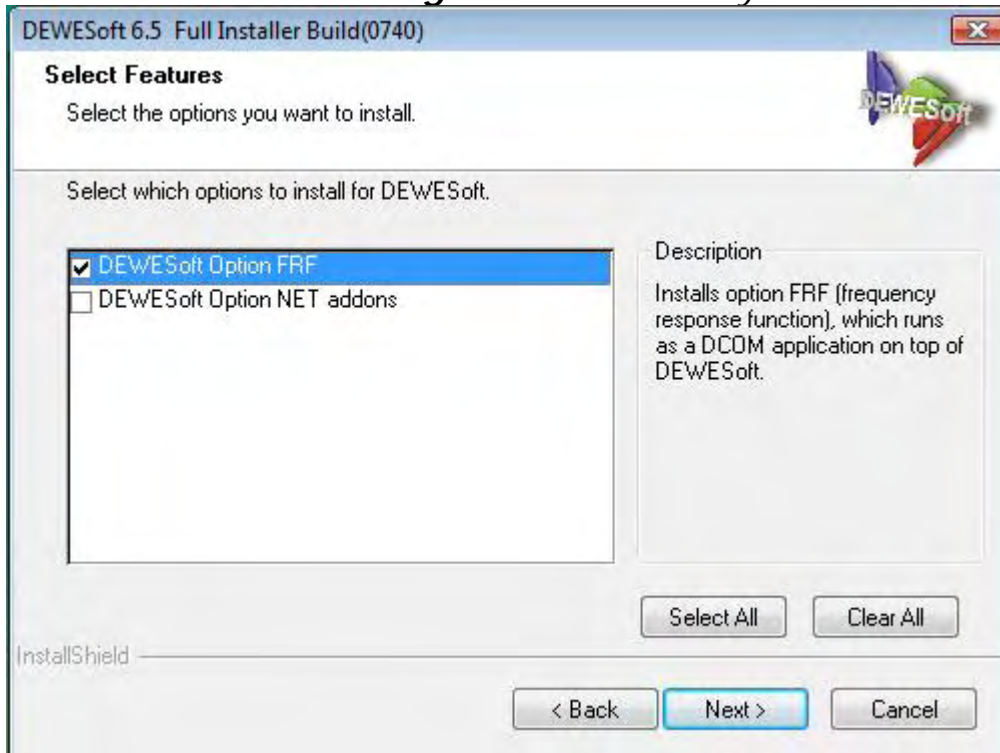
At the CD ROM media you will find the DEWESoft6.xx\_Fullinstaller.exe  
Please double click to this file, and select "DEWESoft for Demo mode" than click next.

*RogaDAQ2 NVH Analyzer & Recorder*



For Modal & FRF Analysis please check the DEWESoft FRF Option.

### *RogaDAQ2 NVH Analyzer & Recorder*



Please follow the installer until DEWESoft being installed.

After the setup you will find 2 icons on the Desktop; please click to DEWESoft6x icon.

In the next step it is necessary to define the DAQ device in the analyser software by using "System" and "Hardware Setup"

Uncheck all "Dewetron Modules" and select the Audio card at the Analog device pop up window. In case of connected RogaDAQ2 at the PC, you can select the RogaDAQ2.

*RogaDAQ2 NVH Analyzer & Recorder*

Hardware setup

Analog CAN GPS Video Math Timing Alarms Analog out NET Plugins Licensing

Analog device  
Audio card ?

Card FOUND

Dewetron modules  
 Use MDAQ/DAQP modules  
 Use PAD modules  
 Use DAQN modules

Card setup Grouping

Audio devices  
Mikrofonarray (RogaDAQ2 SC\_PT 9) V1.01

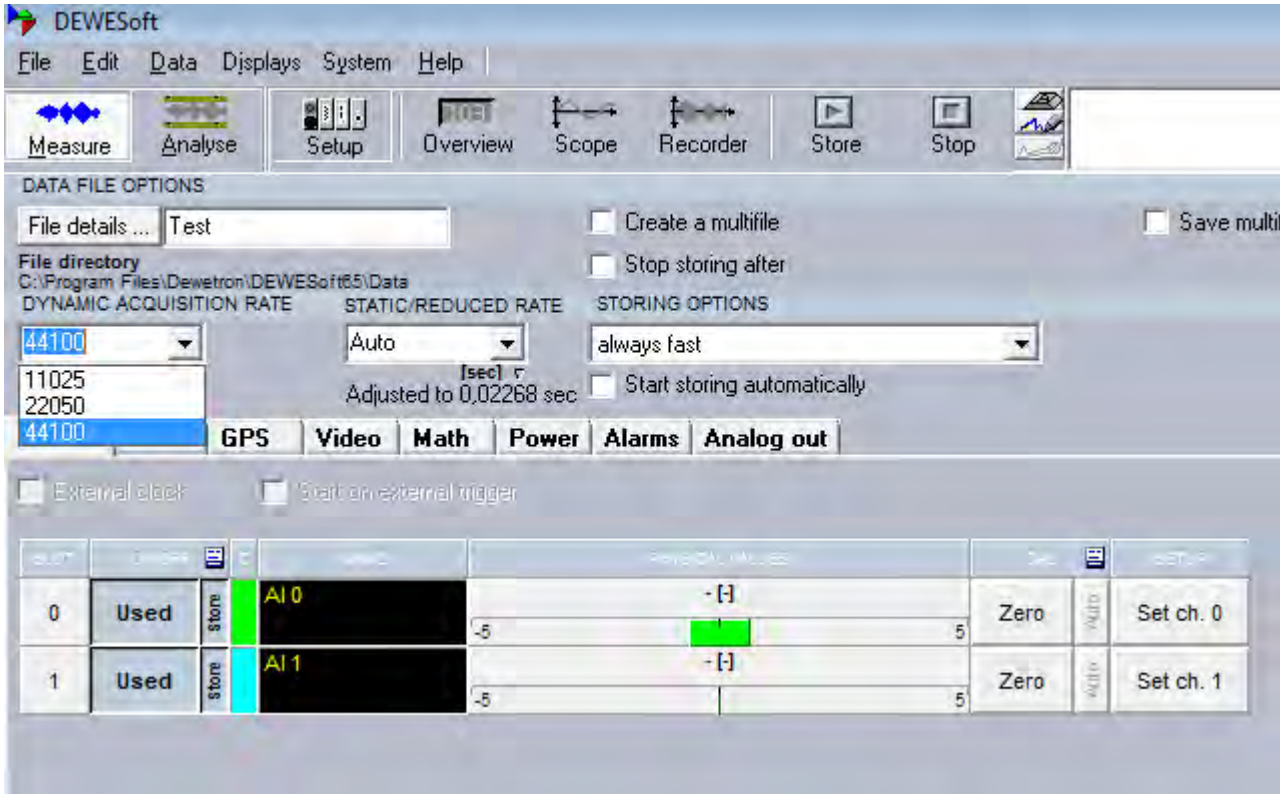
Registration status  
**DEMO**

OK Cancel

The "Registration status DEMO" does not have any restrictions for further measurements and is timely unlimited.

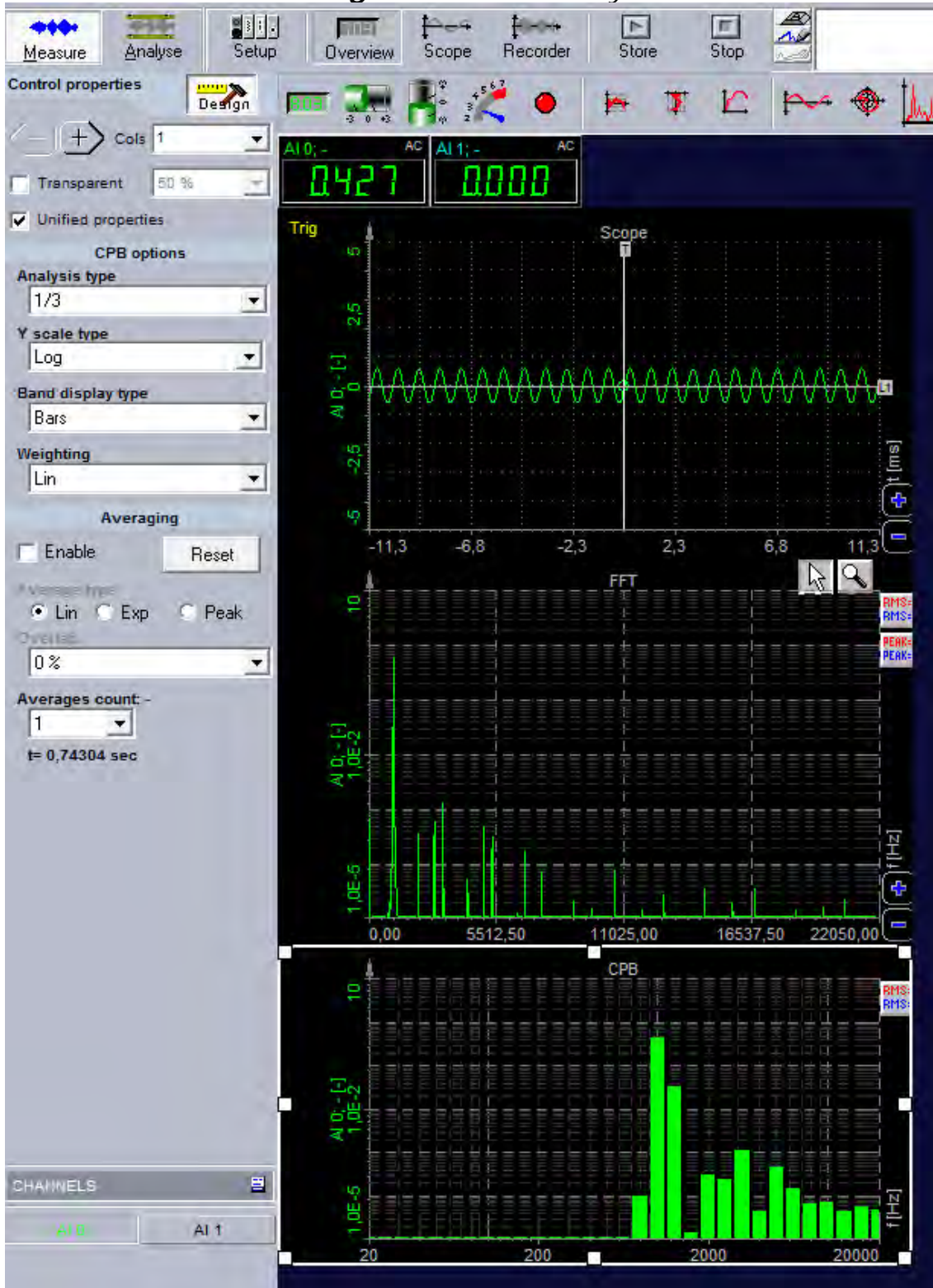
## *RogaDAQ2 NVH Analyzer & Recorder*

In the next step please click to the “Measure” icon; here you can set the sampling rate, and change the engineering units > “SETUP Set ch.x”



By using the “Overview” button it is possible to design many analysis windows.

*RogaDAQ2 NVH Analyzer & Recorder*



*RogaDAQ2 NVH Analyzer & Recorder*

If you have any further questions, please refer to the online help DEWESoft manual, or contact:

**ROGA-Instruments**

Sales Office for Measurement Solutions

Steinkopfweg 7;

D-55425 Waldalgesheim Germany

Phone: +49 (0) 6721 - 9844 - 54

Fax: +49 (0) 6721 - 9844 - 74

E-Mail: [info@roga-instruments.com](mailto:info@roga-instruments.com)

ICP\* is a registered trademark of PCB-Piezotronics